

Installing Microsoft WebMatrix

From <http://www.microsoft.com/web/> click on the Install WebMatrix button



This opens a new page, be sure to read the System Requirements:

- Supported Operating Systems are Windows 7, Windows Vista, Windows Vista SP1, Windows XP SP2+, Windows Server 2003 SP1+, Windows Server 2008, Windows Server 2008 R2.
- You must have a live Internet connection.
- You must have administrator privileges on your computer to run the Web Platform Installer.

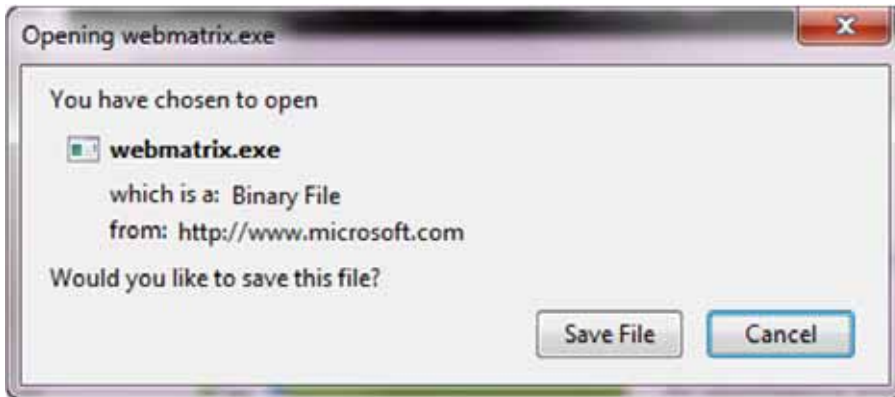
Here, you'll click the Install Now button.



Courtesy of the [QuickBooks for Contractors blog](#) by Sunburst Software Solutions, Inc.

Installing Microsoft WebMatrix

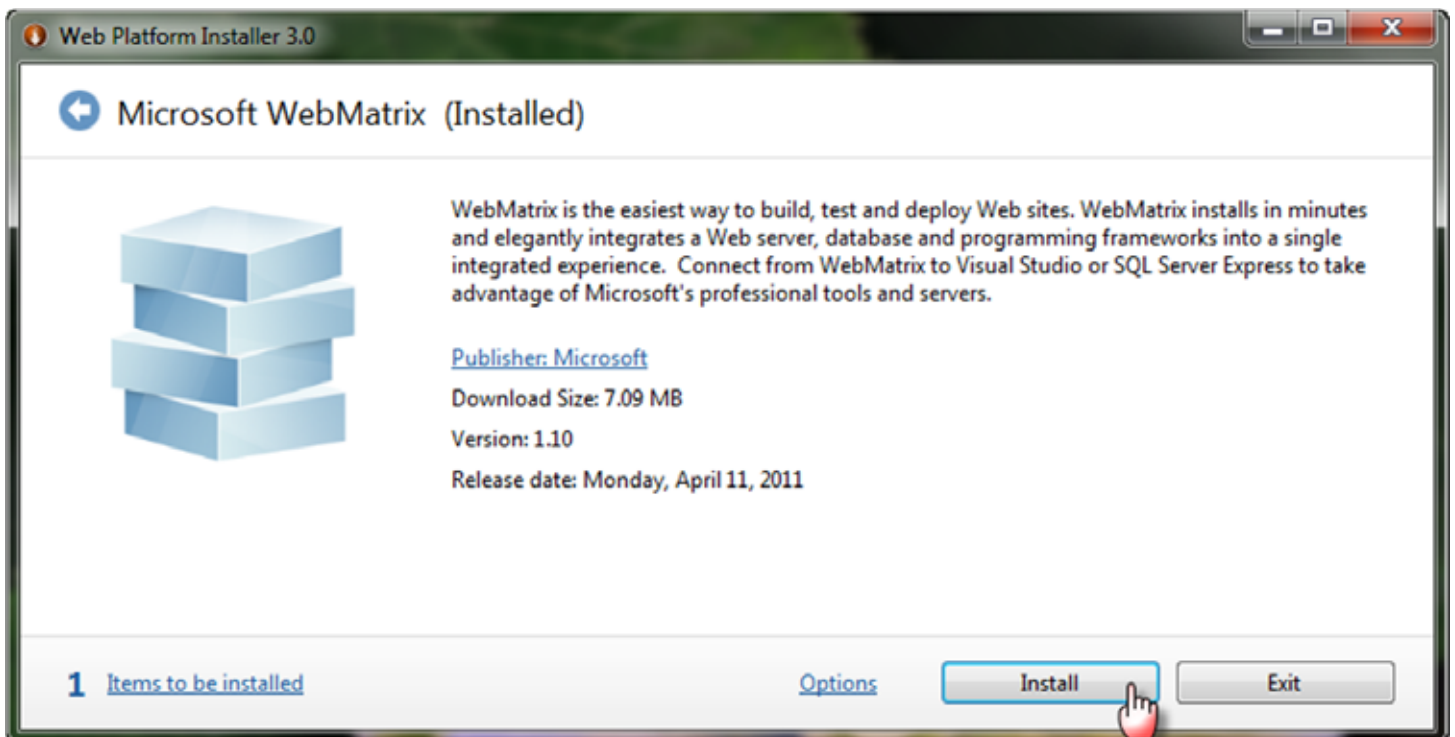
You will be prompted to Run or Save a small file (webmatrix.exe), depending upon your web browser and how you have downloads configured.



If you are running Windows Vista or 7, the User Account Control window will appear, enter the Admin password, and then the Installer package will begin.



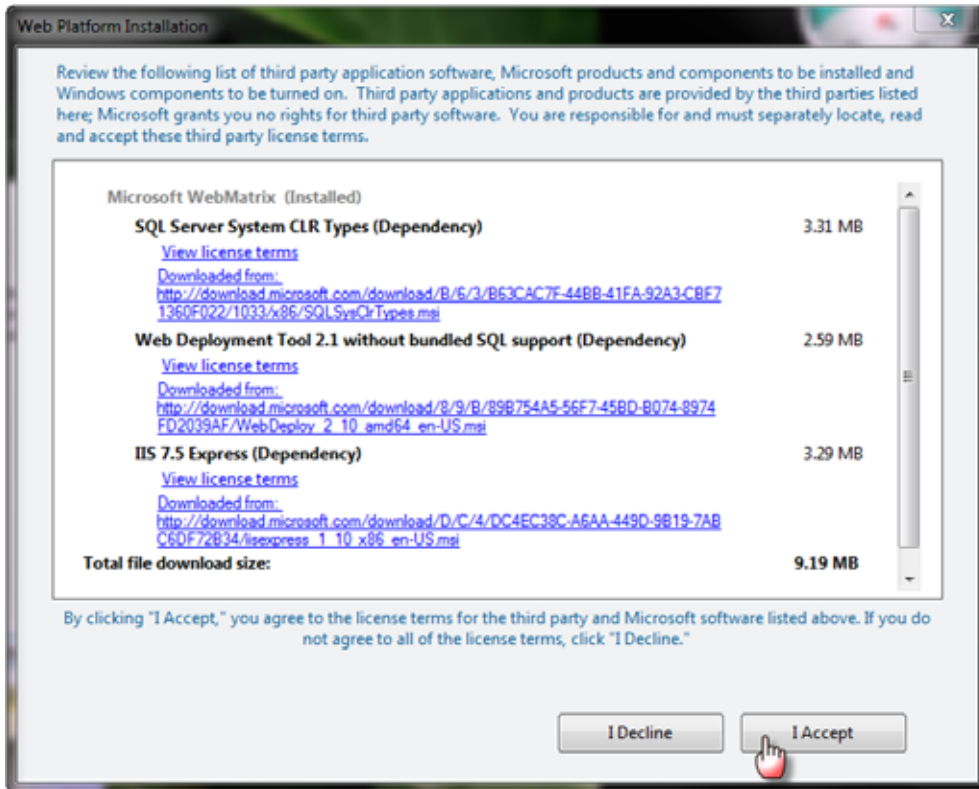
On The Web Platform Installer 3.0 window, click the Install button



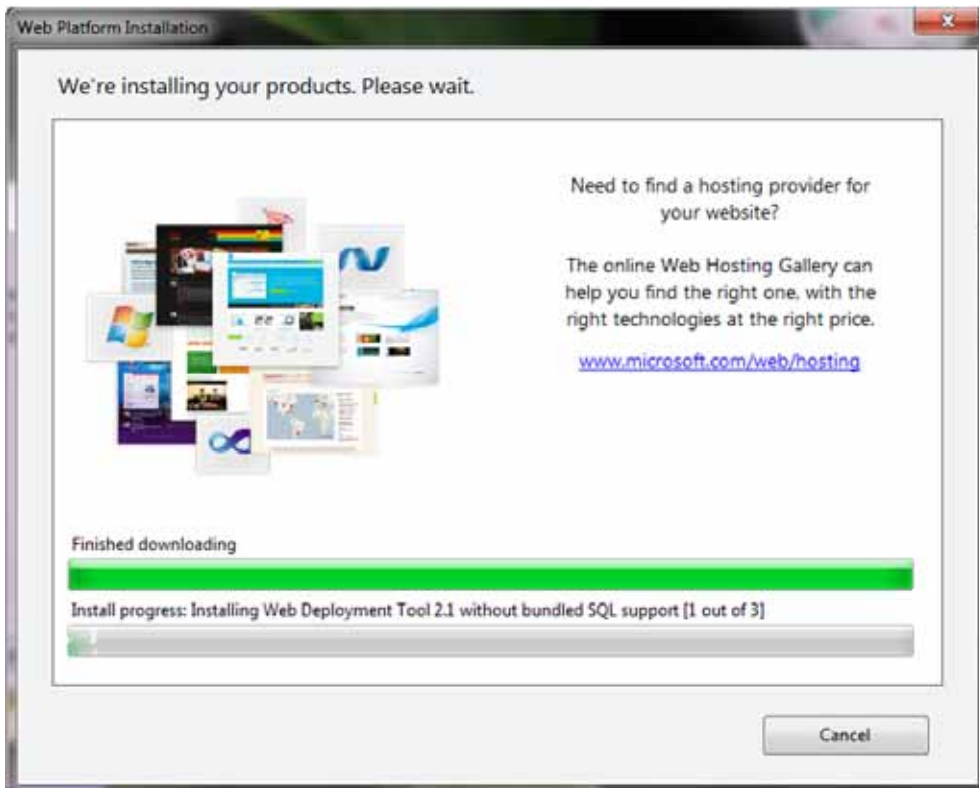
Courtesy of the [QuickBooks for Contractors blog](#) by Sunburst Software Solutions, Inc.

Installing Microsoft WebMatrix

The Web Platform Installation window will display a list of programs that will be installed on your computer – this list may differ from computer to computer, as it will depend on what you currently have on your machine. Click the I Accept button to begin.



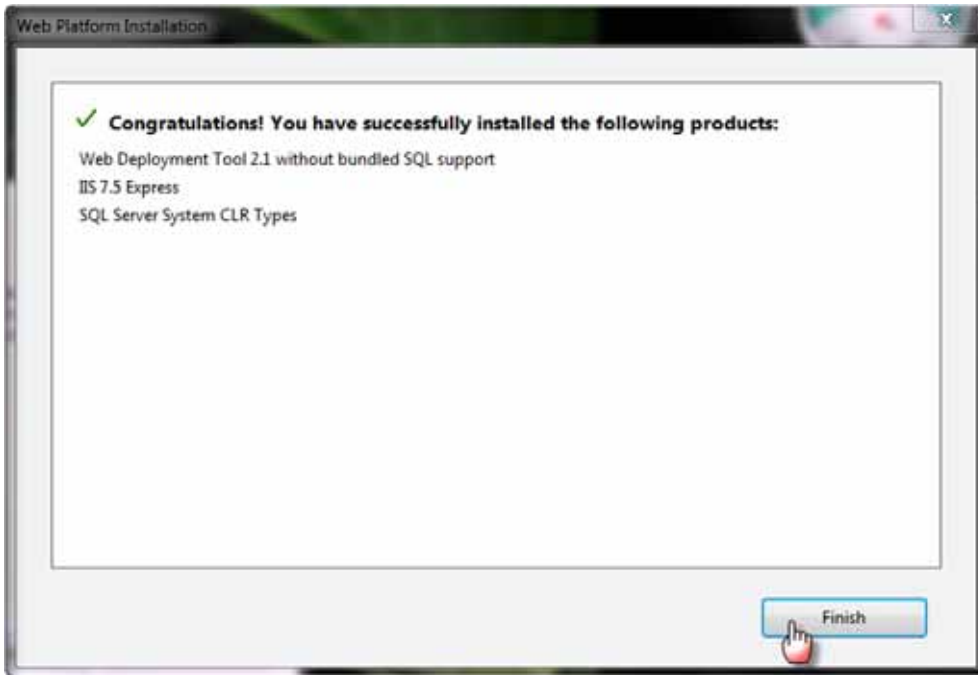
The installer window will show you what is being installed. This download can take a while, so patience is important.



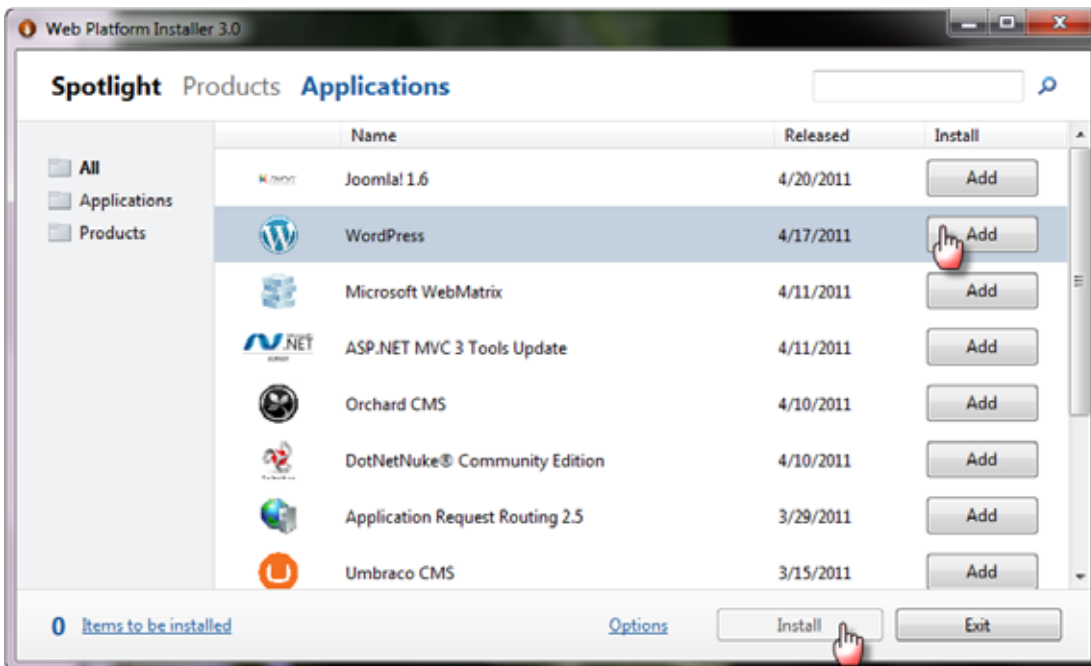
Courtesy of the [QuickBooks for Contractors blog](#) by Sunburst Software Solutions, Inc.

Installing Microsoft WebMatrix

When everything has been downloaded, you'll see the following window. Click Finish.

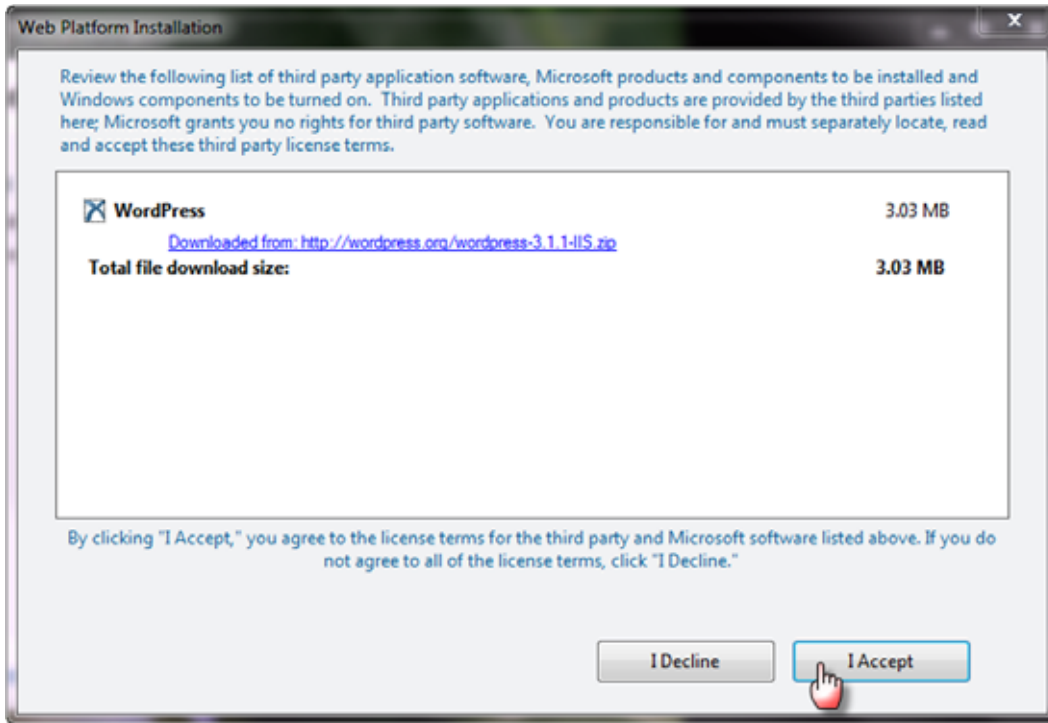


From the Web Platform Installer 3.0 window, you'll see a listing of the available programs that you can work with. So if you are interested in creating a WordPress site, click on WordPress to select it, and then click the Add button and the Install button when it becomes active...

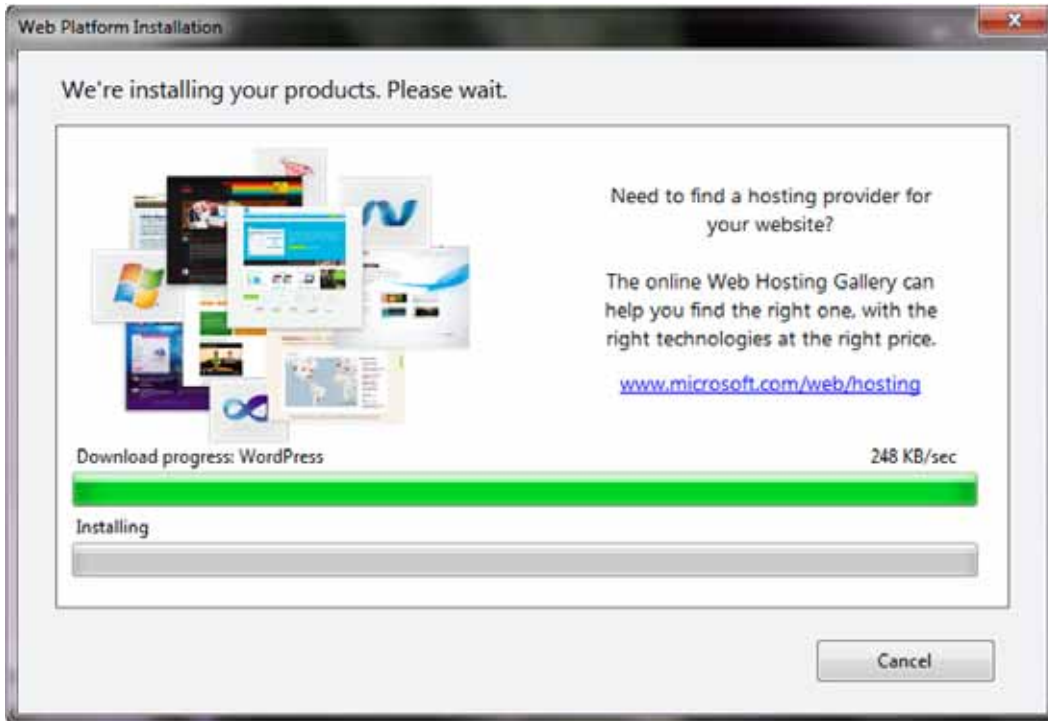


Installing Microsoft WebMatrix

Click the I Accept button on the next window to download WordPress.



The Installer will automatically launch



Installing Microsoft WebMatrix

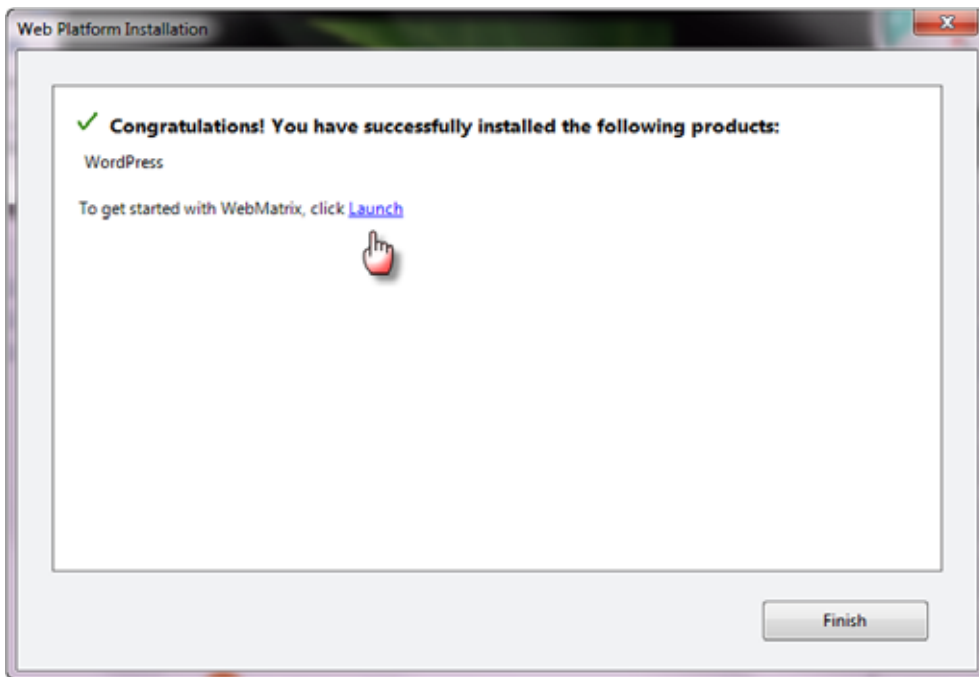
Configuring your WordPress installation

The next window will ask you for several items and the window itself is too large to get a good screen shot, so I'll list the items here, individually and in order – as you complete the items in the window, you will also want to write all this information down and keep it handy for future use. Without the user names and passwords, you won't be able to access your local WordPress installation and work with it.

- By default, you should leave the Create a new data base option alone.
- Database Administrator – by default, this is root and you shouldn't change it.
- Database Administrator Password – a password of your choice
- Database User Name – by default, this is wordpressuser, but you can change it
- Database Password – a password of your choice
- Confirm – type in the password you entered above
- Database server – by default, this is localhost; do not change it
- Database Name – by default, this is wordpress; do not change it
- Unique Key for Passwords – enter a unique key phrase or word
- Unique Key for Secure Passwords – enter a unique key phrase or word
- Unique Key for Authentication – enter a unique key phrase or word
- Second Unique Key for Authentication – enter a unique key phrase or word

Make sure that you have written down and completed all the fields before you hit the Continue button – you cannot come back to find this information easily later!

Click the Launch link on the last window.

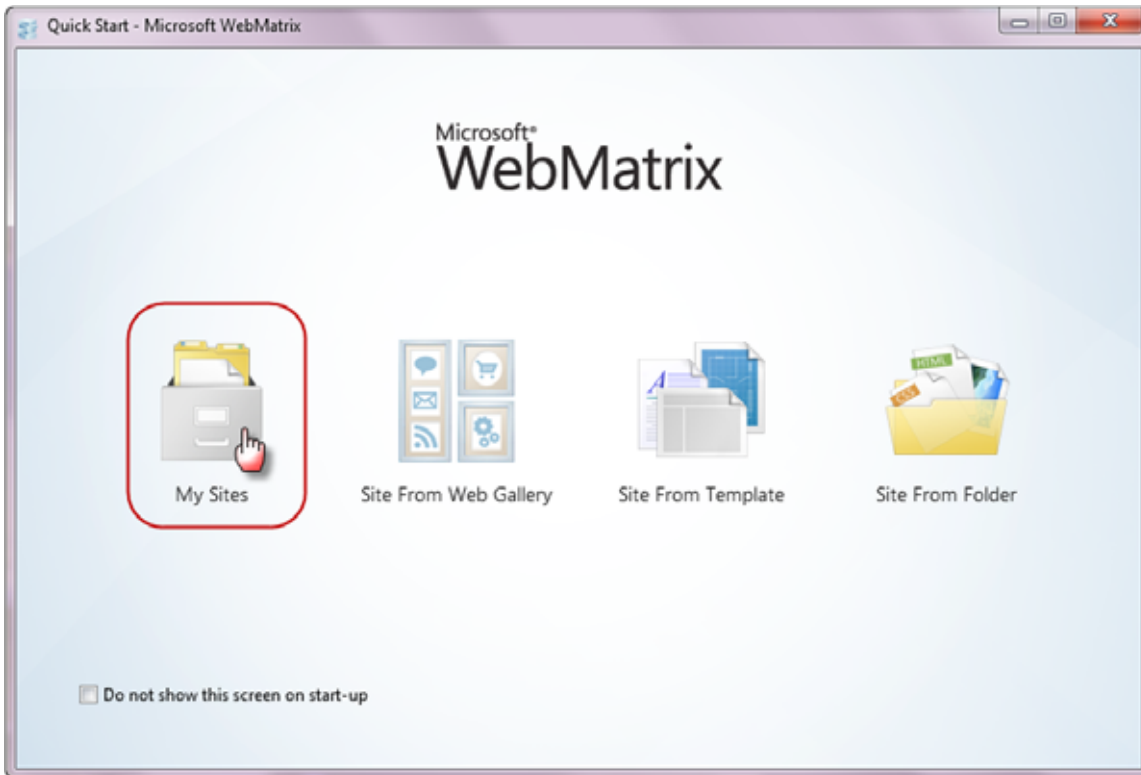


To start WebMatrix later, from your Start button, choose All Programs -> Microsoft WebMatrix -> Microsoft WebMatrix. You can right click on it and Pin it to your Start Menu, your Taskbar, or send it to your desktop as a shortcut.

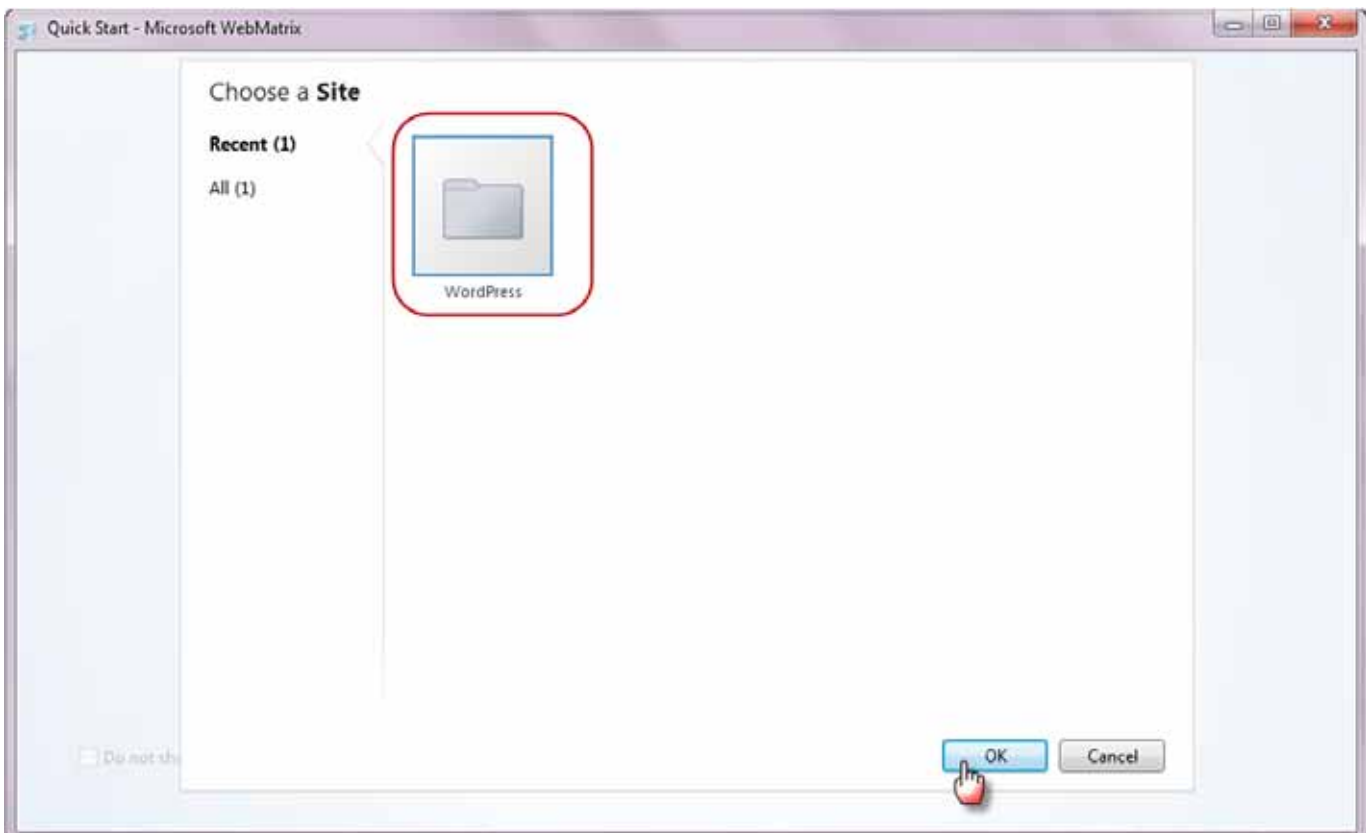
Courtesy of the [QuickBooks for Contractors blog](#) by Sunburst Software Solutions, Inc.

Installing Microsoft WebMatrix

Click the My Sites icon



Click WordPress and then OK



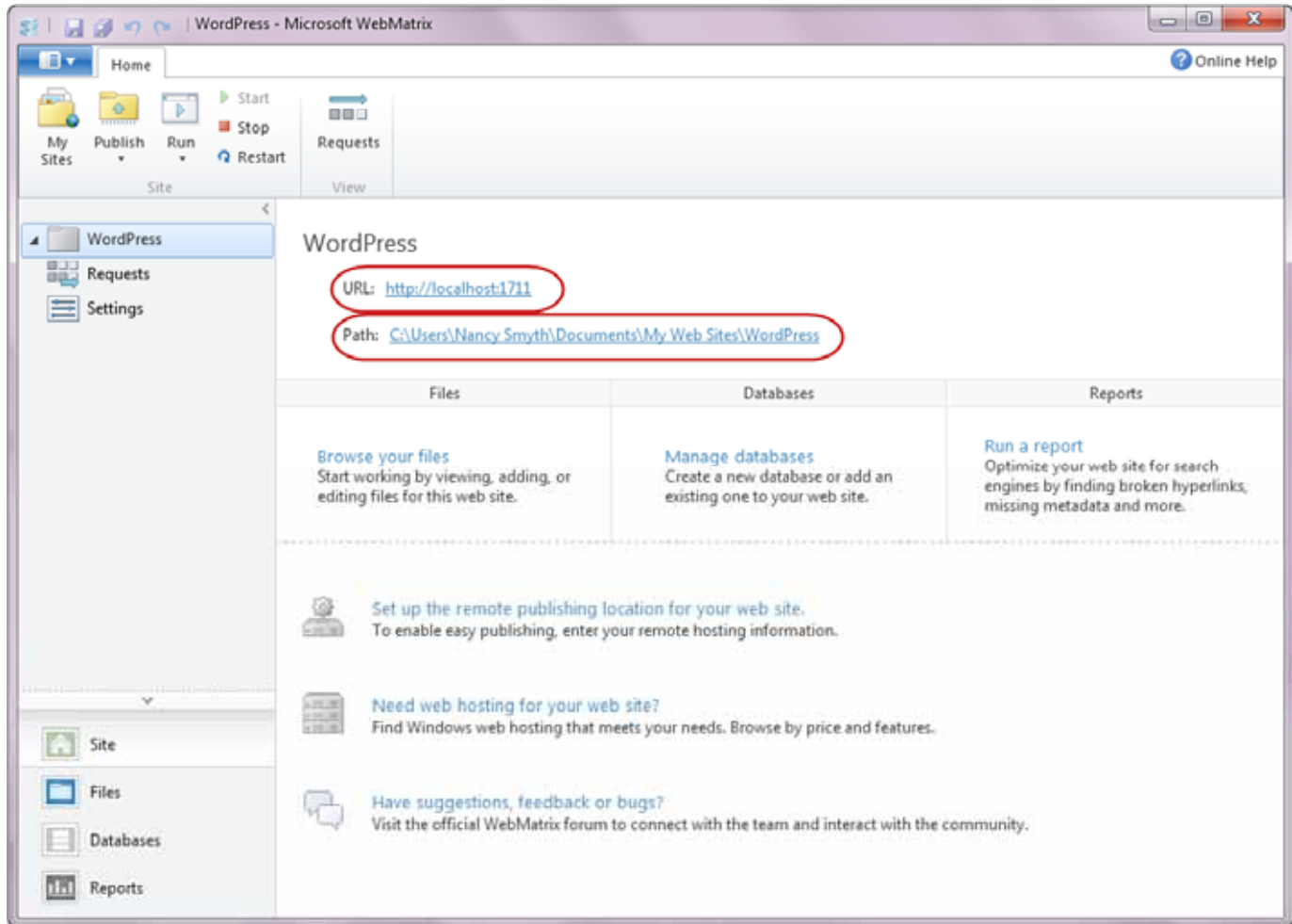
Courtesy of the [QuickBooks for Contractors blog](#) by Sunburst Software Solutions, Inc.

Installing Microsoft WebMatrix

The two most important things on this window are the URL and the Path.

The URL is what you will click on to open your WordPress site in your default browser.

The Path is where all the WordPress files live locally on your computer.



Installing Microsoft WebMatrix

Click on the url to open your web browser. This will launch a Welcome to WordPress window similar to that shown below, where you will be asked for some final information.



Here, you will enter your site title.

The default user name is admin, you can change it – **BUT YOU MUST WRITE THIS USER NAME DOWN**, it is the username that you will use to login to your WordPress site and work with it.

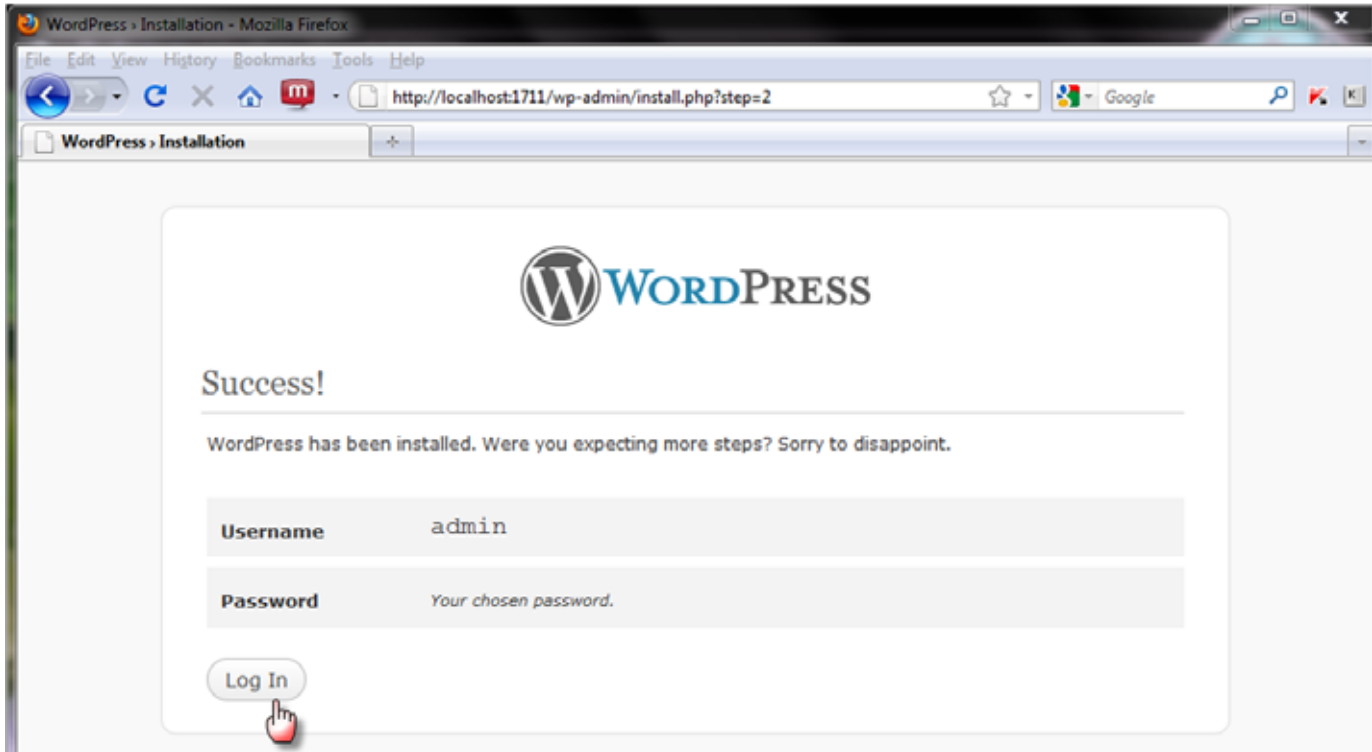
Enter a password and then enter it again to confirm it – again, write down this password, you will need it in order to login to your WordPress site.

Enter your email address.

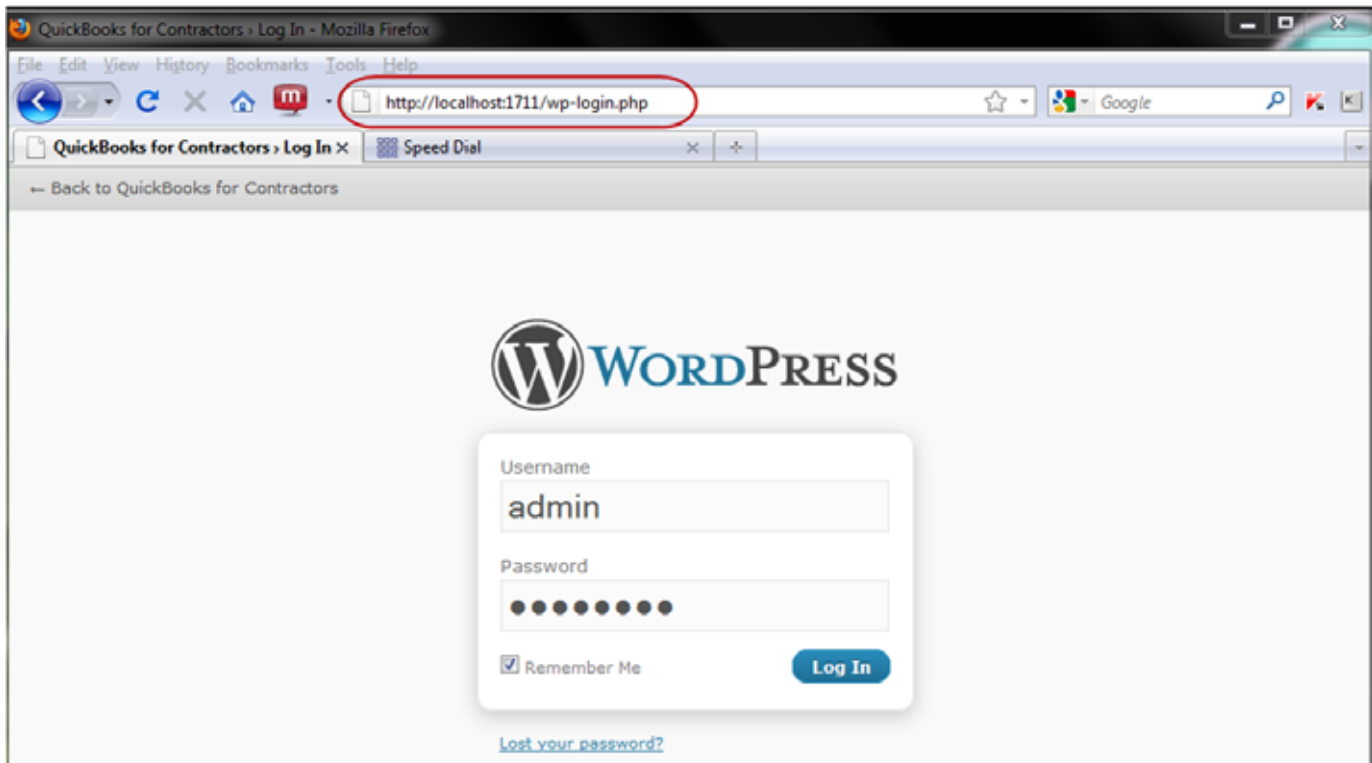
And lastly, click the Install WordPress button.

Installing Microsoft WebMatrix

When you see the window below, you'll know that WordPress has been successfully installed. Click the Log In button to launch the backend of your WordPress website.



Do yourself a HUGE favor and bookmark this url, this way you can launch the backend (administrator) panel of your WordPress site directly from your browser.

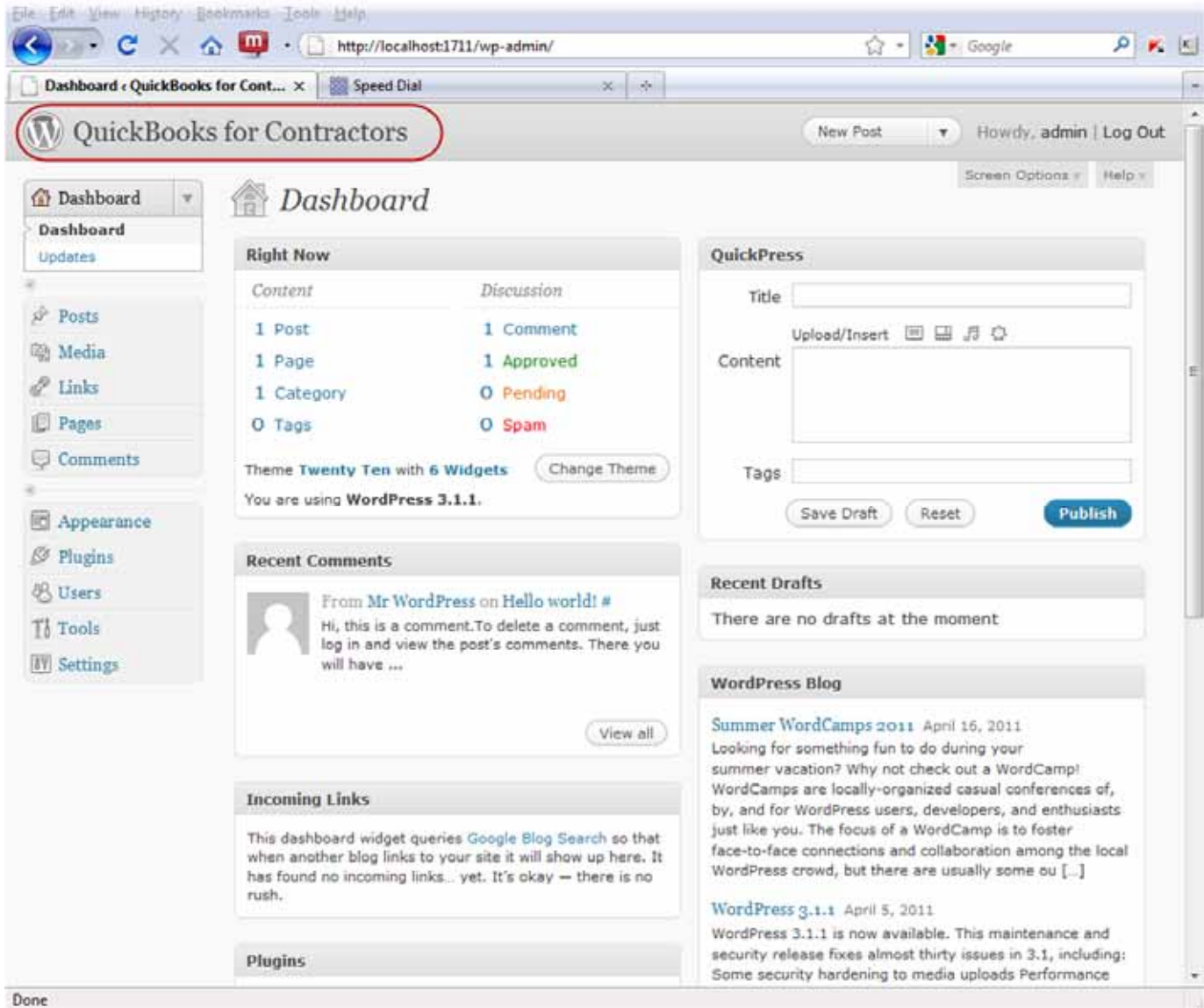


Courtesy of the [QuickBooks for Contractors blog](#) by Sunburst Software Solutions, Inc.

Installing Microsoft WebMatrix

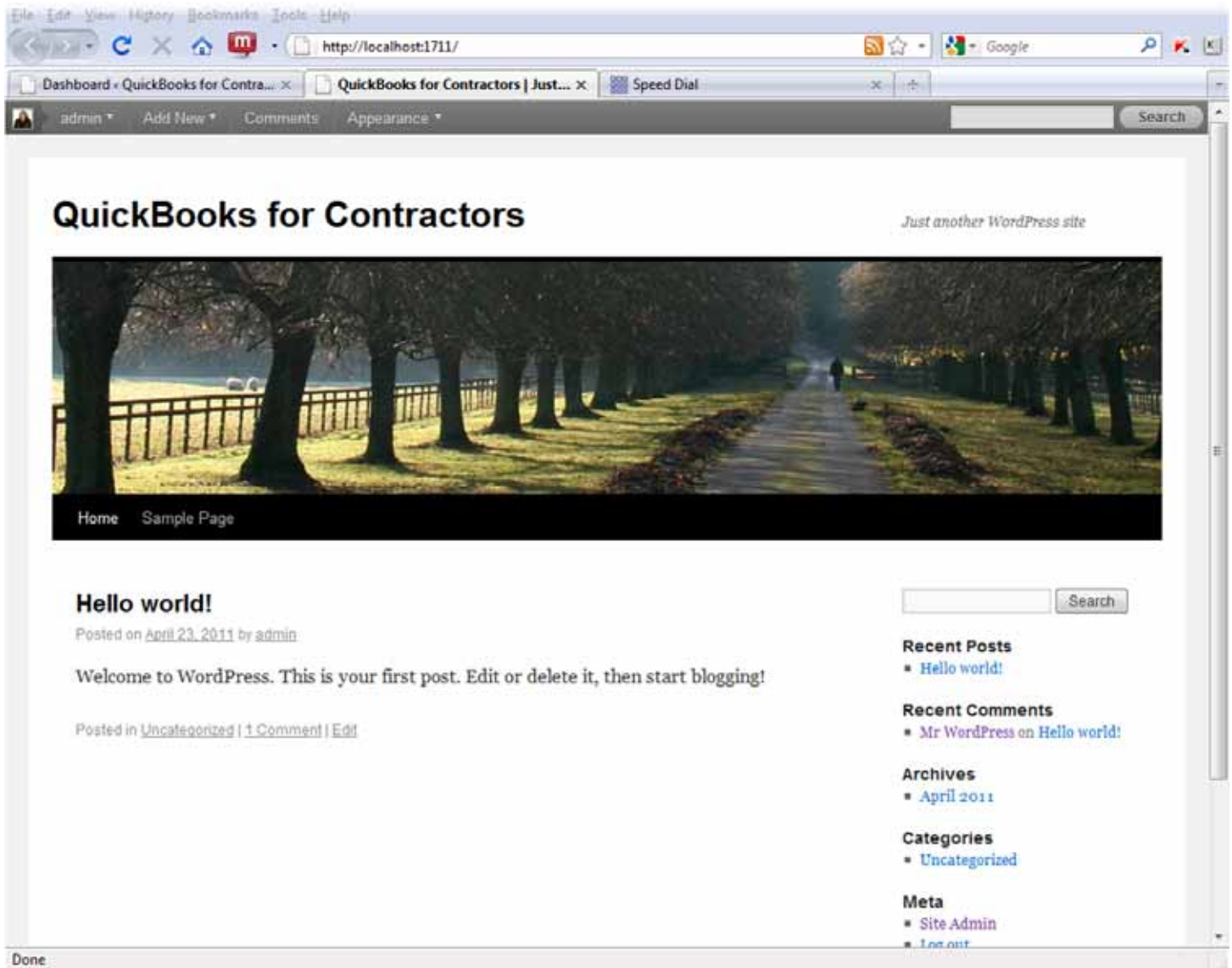
When you click the Log In button; your WordPress Administrator panel will display – this is where you will spend the bulk of your time on your WordPress site.

Before going any further, right click on your site name (circled in the screenshot below) and select Open in new tab or Window; this shows you the front end of your website – you should bookmark that url as well.



Installing Microsoft WebMatrix

When you right click on your site title in the Administrator panel and choose Open in new tab or window, the front-end (what everyone will see when they visit your website) will display. Bookmark this url as well.



This concludes our tutorial on installing Microsoft WebMatrix and creating a WordPress site locally on your computer, so that you can become familiar with WordPress before actually creating a live website with it.

One final, and very important note – WebMatrix MUST be running (open) on your computer in order to work with your newly created WordPress site. To start WebMatrix; click your Start button -> All Programs -> Microsoft WebMatrix -> Microsoft WebMatrix. You can right click on it and send it to your desktop as a shortcut. Click My Sites -> WordPress -> OK and then, just minimize it and work with your browsers bookmarks.

Future tutorials will include how to choose a WordPress theme (layout) for your website, how to install plug-ins for additional functionality, and how to create a WordPress post.